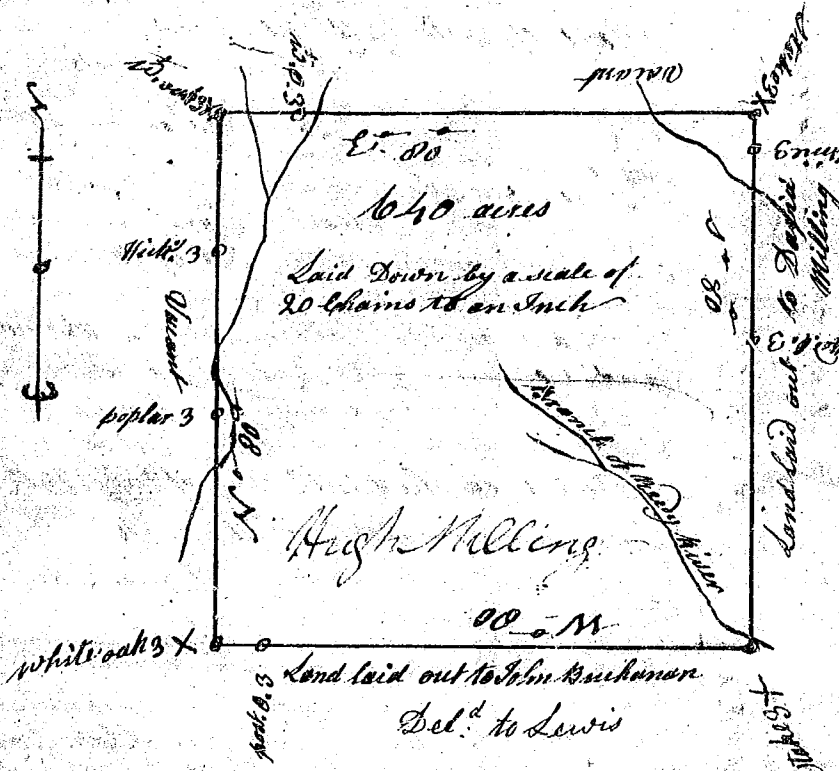
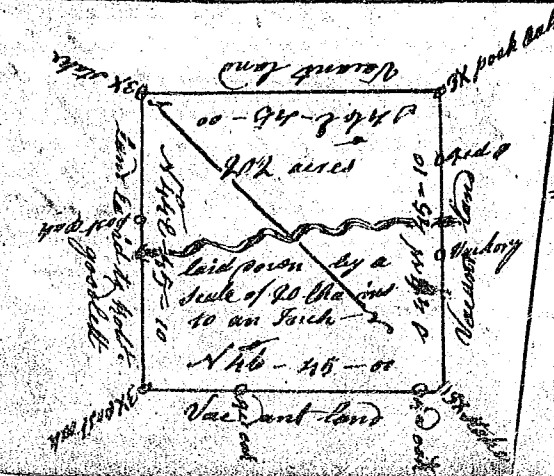


South Carolina
 Pursuant to a warrant to me directed under the hand and seal of John Thomas Esq. Commissioner of Locations for ninety six district north of Saluda, bearing date the 21 day of May 1784 I have admeasured and laid out unto Daniel Huger a tract of Land containing five Hundred and nineteen acres situate lying and being on Needy River bounding on the N.E. on Needy River; all other sides on Vacant Land and hath such shape form and marks as the above plat represents
 Surveyed the 18th day of July 1784.
 Thomas Lewis Esq.
 Recorded the 13th July 1784 del. to Lewis



South Carolina
 Pursuant to a warrant to me Directed under the hand and seal of John Thomas Esq. Commissioner of Locations for ninety six district north of Saluda River bearing date the 21st day of May 1784. I have admeasured and Laid out unto Hugh Milling a tract of Land containing six Hundred and forty acres situate lying and being in ninety six District north of Saluda River on the waters of Needy River bounding on the south by land laid out to John Buchanan, on the Ely Land laid out to David Milling all other sides by Vacant Land and hath such shape form and marks as the above plat represents
 Surveyed the 9th day of May 1784
 Tho: Lewis Esq.
 Recorded 13th July 1784



State of South Carolina
 Pursuant to a warrant from John Thomas Esq. Commissioner of Locations ^{date 21 May 1784} I have admeasured and laid out unto William Benson a tract of two hundred and two acres situate in ninety six district on south fork of Needy River situate being the river's improvement, bounding south east on land laid out to Robert Goodlett and on all other sides on Vacant Land and hath such shape and marks as the above plat represents
 Surveyed this 14 day of July 1784
 recorded the 23 July 1784
 Wm Benson Esq.